

# How to Open a CSV file in SPSS

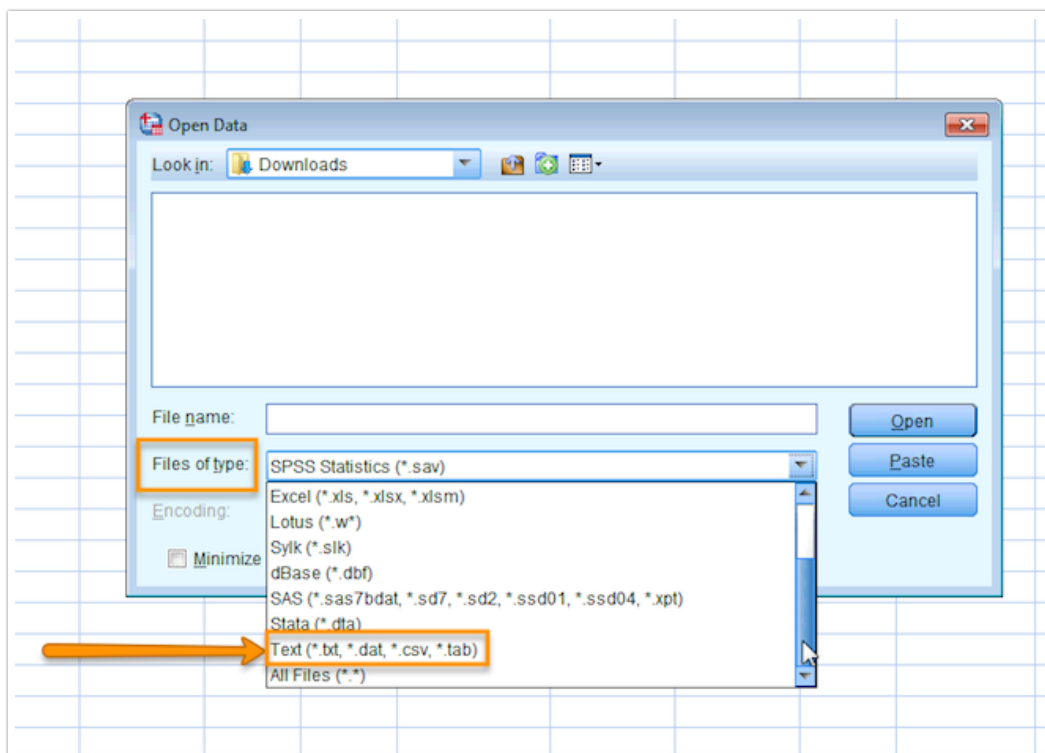
If you're working in SPSS, but prefer SurveyGizmo's CSV export settings, here is a way to open a CSV in SPSS for analysis.

Before we get started, it is important to note that several SurveyGizmo features designed for SPSS will not work if you choose to import your CSV file in to SPSS (as opposed to the SPSS export option).

- Variable Names
- Variable Labels

First, export your data to a CSV file. See [this article](#) for more information on CSV exports.

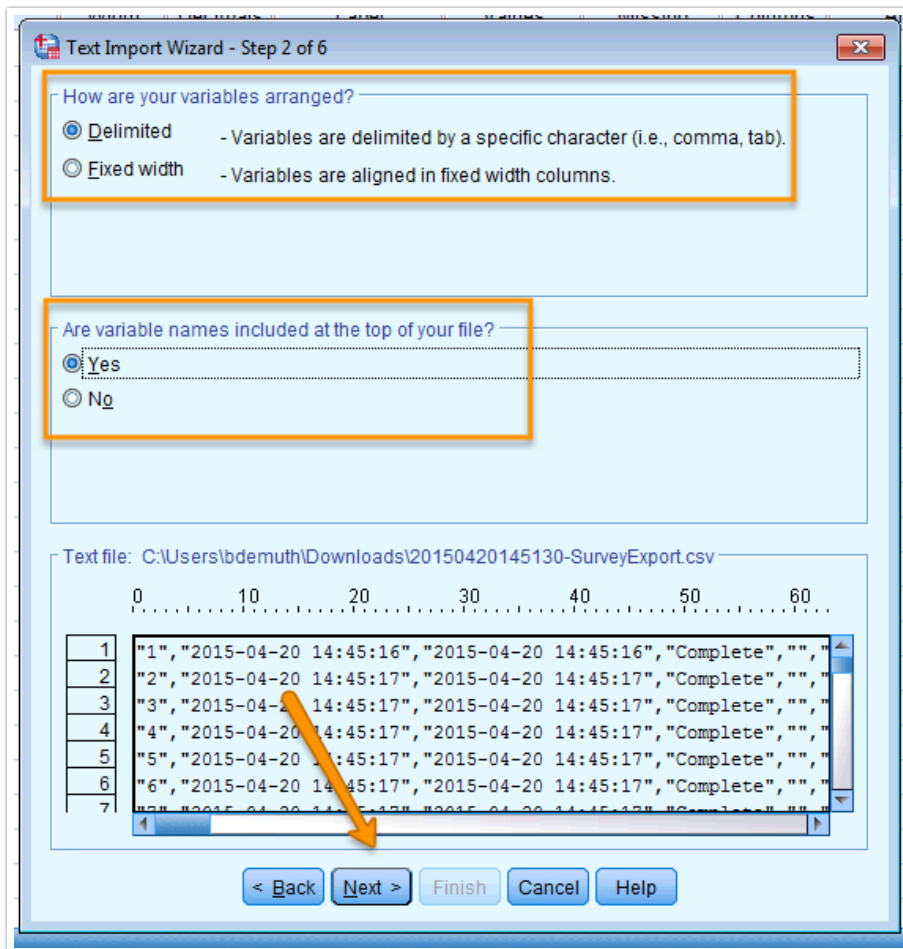
Then open your CSV in SPSS by going to **File > Open** and selecting the **.csv** filetype from the dropdown menu, as shown here:



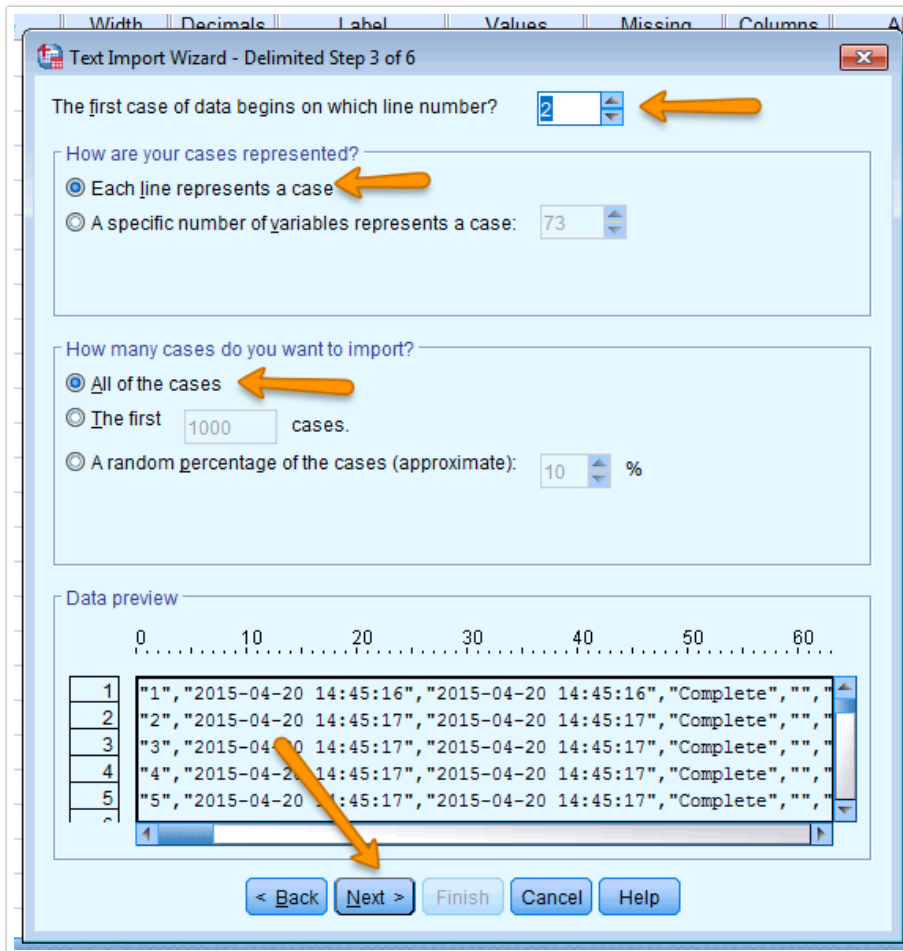
After selecting your CSV file, you will be guided through SPSS's **Text Import Wizard**. Follow the screen settings below (most settings remain on their default option).

**Screen 1:** select **Next**

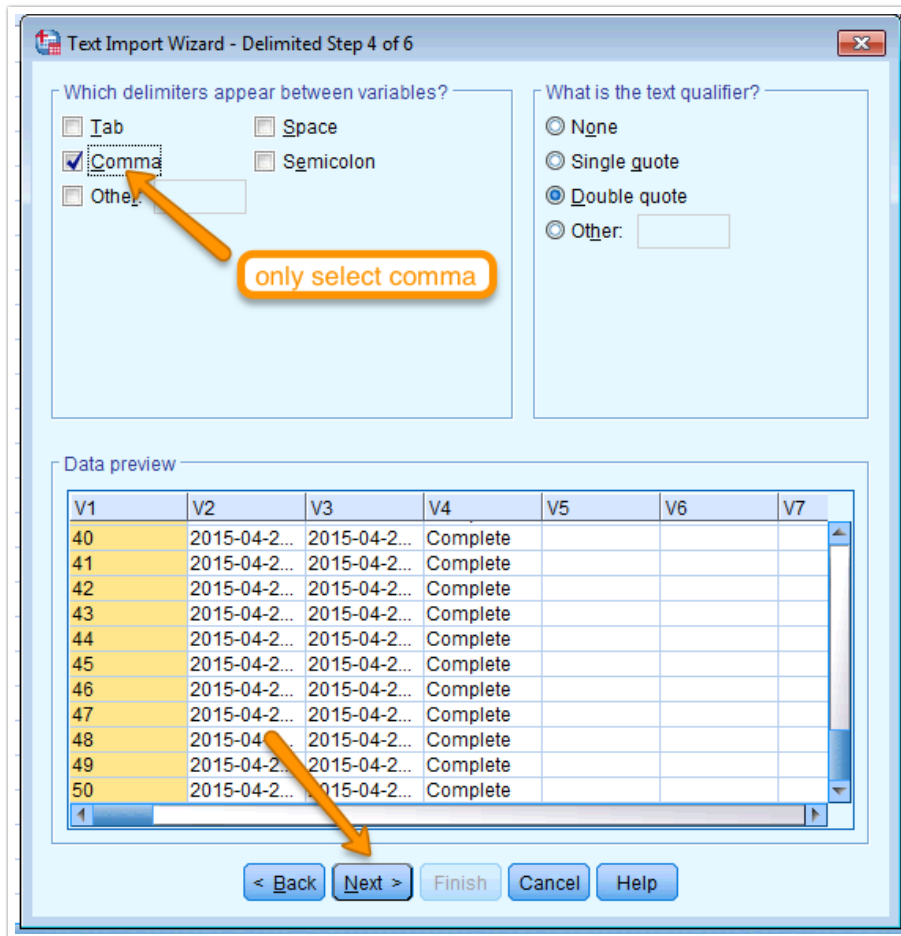
**Screen 2:** select **Yes** for **Are variable names included at the top of your file?**



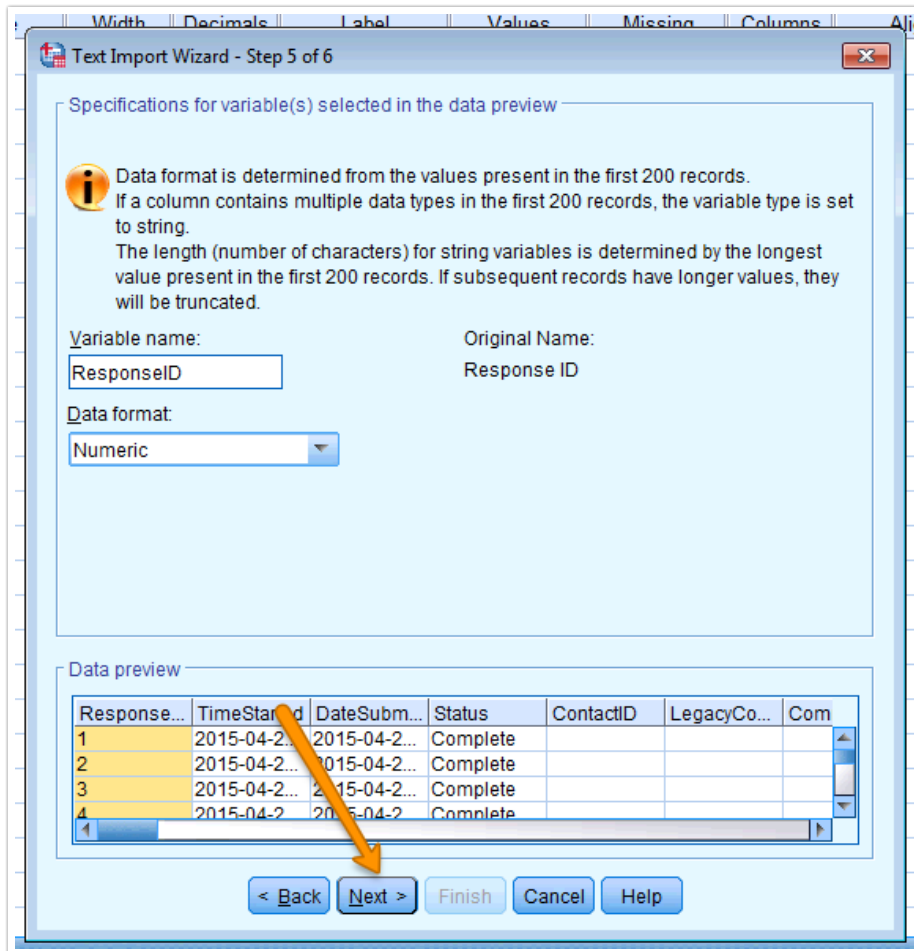
**Screen 3:** select **Next**



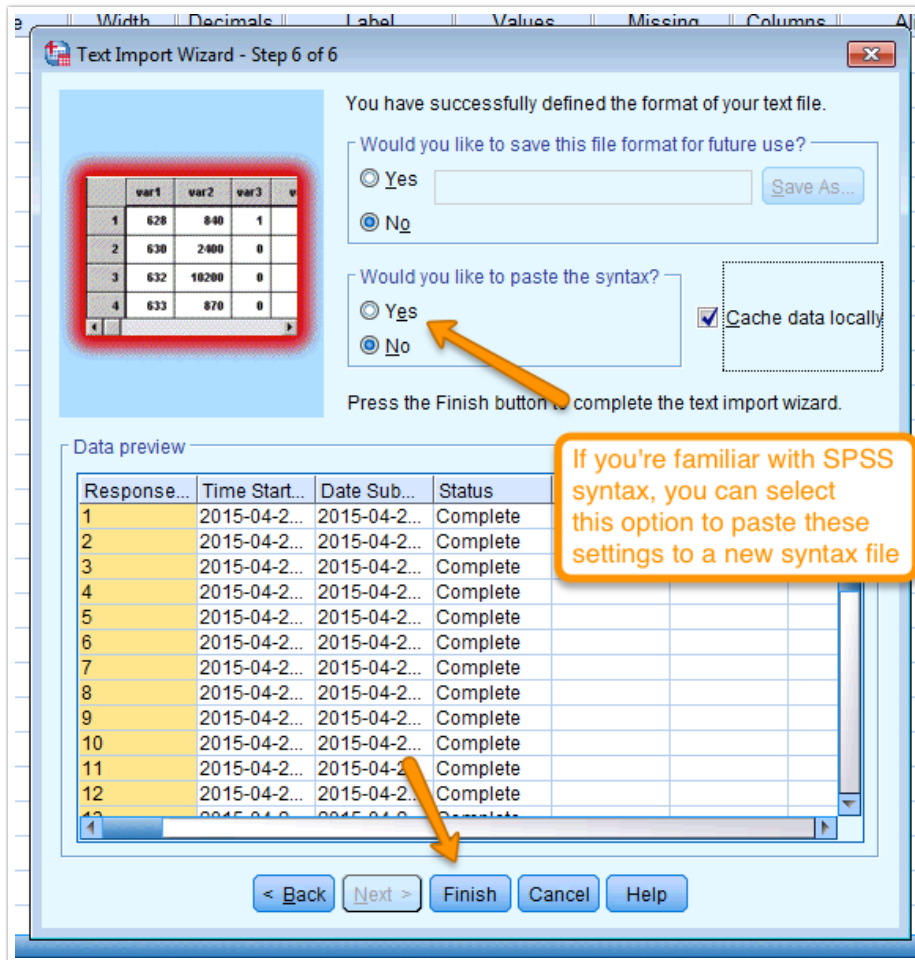
**Screen 4:** deselect any delimiters other than **Comma**, select **Next**



**Screen 5:** select **Next** \*you may see a message that says **Invalid variable names for this application have been found and changed** - that's ok! Just press ok.



**Screen 6:** select **Finish**, electing to **Paste to Syntax** if you'd like



And that's it! All of your data should appear in a data file in SPSS, and you can then save that out as a .sav file for future use.

Related Articles