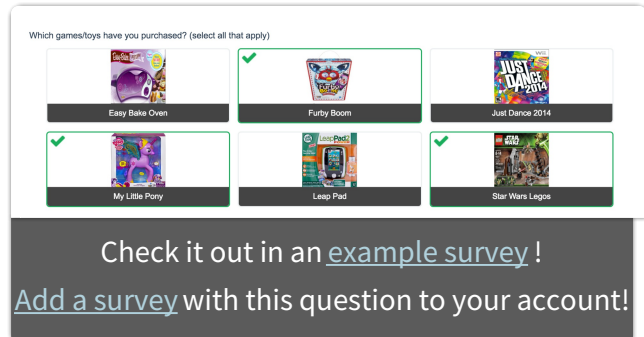


Image Select (multi select) Question Type

The Image Select (multi select) question type displays multiple images to the respondent allowing them to select their answer by clicking directly on the images. Respondents are able to select multiple images.



When to use it

Use the [Image Select \(select one\)](#) question type if you only want your respondents to select a single image.

If you are looking for steps to add an image to your question text check out our [Add Image to Question Text Tutorial](#).

Setup

1. To set up a Image Select question it's easiest to start by uploading the images you would like to use in the Image Select question to your **File Library**. See our [File Library](#) tutorial to learn how!
2. Click the **Question** link on the page where you would like to add your Image Select question.
3. Select **Image Select (multi select)** from the Question Type dropdown and enter the question text you wish to ask.
4. Scroll to the **Multiple Choice Options** and click the image placeholder to begin adding your answer options.

5. In the **Insert Image** dialog, select the image you wish to use, upload a new image, or enter a URL to an image.

6. Click **Insert Image**.
7. When you return to the list of answer options use the **Click to Add Option** button to add another image answer option. Rinse and repeat. Make sure to click **Save Question** once you're finished.

Validation Options

Use the **Validation** tab to set **Answer Requirements** for your Image (multi select) question.

- You have the option **Limit answers to** a specific count in the event that you want

to set a maximum amount of selectable images.

- Use the **If answered, minimum answers required** setting to determine the lowest number of images that can be selected by your respondent. Failing to select the minimum will result in a notification message being displayed to the respondent.

The screenshot shows the configuration interface for an 'Image (multi select)' question. The 'Validation' tab is active. Under the 'Require' section, the 'Not required' option is selected. The 'Answer Requirements' section is highlighted with a red box and contains two input fields: 'Limit answers to' and 'If answered, minimum answers required'.

Layout Options

There are a number of options available via the **Layout** tab of the Image (multi select) question.

- If you have a large number of images for the respondent to choose from, consider using the **Images Per Row** field to determine how many images are display per each row.
- Width or **Height** (in pixels) for your images. We do not recommend adjusting both values as this is likely to result in distorting the image.

Image (multi select)

Question Answers Logic Validation **Layout** Piping / Repeat

Images Per Row

Option Sorting

Original option order

Randomize options

Alphabetize options

Comments

Allow comments for this question

Require comments for this question

Force Image Width:

Force Image Height:

Best Practice Tip: Recommended Image Size

For Image Select questions we recommend image files of no larger than 200px x 200px.

When uploading images to the file library you have the option to scale your image using pixel width or a percent. There are also various tools online to resize images e.g. <http://www.picsize.com/>. It is important to note that resizing images may negatively affect the quality of the image.

Image-1.jpg

Title

Caption







Scale image to

Percent (%)

Pixel Width (px)

On a desktop and most laptops the Image Select question type looks like so.

Which games/toys have you purchased? (select all that apply)

 Easy Bake Oven	<input checked="" type="checkbox"/>  Furby Boom	 Just Dance 2014
<input checked="" type="checkbox"/>  My Little Pony	 Leap Pad	<input checked="" type="checkbox"/>  Star Wars Legos

When optimized for mobile devices the Image Select question type looks very similar.

By default, survey questions show one at a time on mobile devices to prevent the need for scrolling on smaller screens. You can turn off this [one-at-a-time interaction](#) if you wish.

Image select multi

Which games/toys have you purchased? (select all that apply)



Easy Bake
Oven



Furby Boom



Just Dance
2014



My Little
Pony



Leap Pad



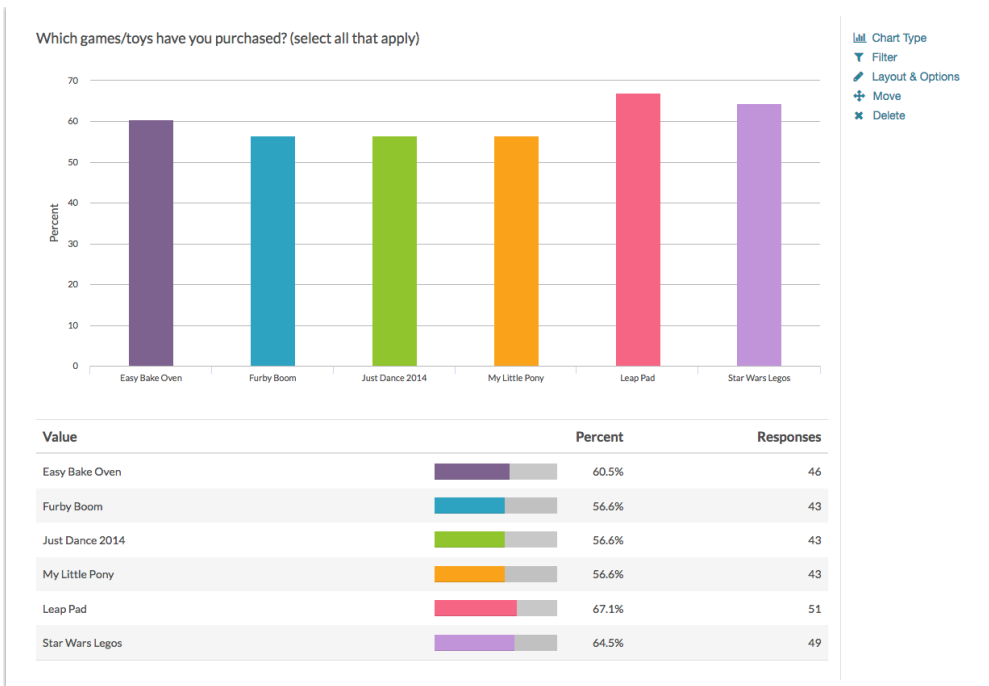
Star Wars
Legos

0%



Reporting

Multiple Image Select questions report as a [Vertical Bar Graph](#) by default with a table that includes a percentage for each answer option. The reporting values rather than the images themselves are used within reporting. These percentages will not add up to 100% as respondents can choose more than one option.



- [+ See additional compatible chart types](#)
- [+ See what other report types are compatible](#)

Exporting

In a [CSV/Excel export](#) , the multiple Image Select question will have a column for each answer option. The reporting values are displayed in the cells when the image was selected.

FA	FB	FC	FD	FE	FF	FG
Strawberry:V	Broccoli:Whi	Carrot:Which	Corn:Which c	Tomato:Whi	Peas:Which c	Cherries:Whi
Strawberry				Tomato		Cherries
Strawberry		Carrot				Cherries
						Cherries
Strawberries				Tomato		Cherries

Related Articles